

SMD Molded Power Inductor

GCDA1240 Series

FEATURES

- Integrated Shielding Construction
- Alloy Material with Excellent withstanding Current Characteristics
- Featured with High Inductance and Low DCR Characteristics
- Variable Inductance Value (2.2uH ~ 22uH) with Wide Frequency Range
- Operating Range: -45°C~+125°C(Including Self- Temperature Rise)
- RoHS Compliant



PART NUMBER CONSTRUCTION

GCDA1240

Series

2R2

Inductance*

M

Tolerance①

T

Packing②

① Tolerance: M = 20% N = 30%

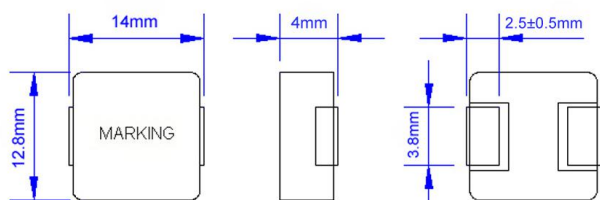
② Packing: B = Bulk T = Tape and Reel

*Refer to Electrical Specification table

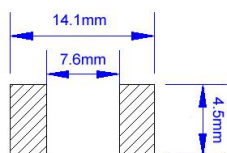
ELECTRICAL SPECIFICATIONS

| Part Number | Inductance(μH) ±20% | DCR(mΩ) | | I _{rms} (A) | I _{sat} (A) |
|---------------|------------------------|---------|-----|----------------------|----------------------|
| | | Typical | Max | | |
| GCDA1240-2R2M | 2.2 | 5.0 | 7.5 | 12 | 22 |
| GCDA1240-3R3M | 3.3 | 9.2 | 16 | 10 | 18 |
| GCDA1240-4R7M | 4.7 | 13 | 20 | 8.0 | 15 |
| GCDA1240-6R8M | 6.8 | 19 | 29 | 7.0 | 12 |
| GCDA1240-100M | 10 | 27 | 42 | 6.0 | 10 |
| GCDA1240-150M | 15 | 41 | 53 | 5.0 | 8 |
| GCDA1240-220M | 22 | 56 | 68 | 4.0 | 7 |

PRODUCT DIMENSIONS



RECOMMENDED LANDING PATTERN



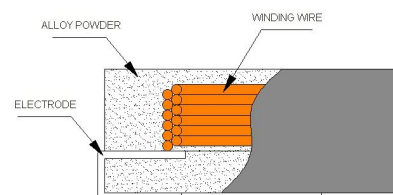
MATERIALS & STRUCTURE

Core: Alloy Powder

Wire: Copper

Terminal: Nickel Plating

Ink: Black



PACKING

800PCS/REEL